

# HB-THERM<sup>®</sup>

## VARIO-5

### Switching Unit for Variothermal Control

Product Catalogue 2015-10



## Switching Unit Vario-5

Certain challenges in injection moulding cannot be overcome with classical mould temperature control. The solution is a variothermal control: High temperature during injection, cold temperature in the cooling phase.

Together with two temperature control units, the Vario-5 forms a variothermal system according to the fluid-fluid technique. Alternatingly, it links either the hot or the cold unit to the same circuit. It is quite possible to use existing moulds if the temperature control channels are suitably arranged.

Vario-5 provides easy and quiet operation. It supports the user in determining the optimum settings.

### *...after the heat, stay cool!*

Improved part quality

- Eliminate weld lines
- Contour accuracy in the moulding of minute structures
- Optimal surface quality
- Reduce sink marks

Improved temperature control

- Short heating up and cooling down times
- Optimize cycle time and quality

### *...standard temperature control units mean minimal investment*

- Multiple use of the units, also for standard applications
- Use of existing temperature control units
- cost friendly concept
- Much experience with proven systems

### *...small, clean and quiet*

Squeezes into almost everywhere

- Made possible by ingenious hydraulic modules

Can also be used in a clean room

- Fibre-free insulation, abrasion resistant castors and high-gloss finish

Silent

- No pressure shocks
- Without compressed air



### *...precise, powerful and efficient*

- Highly accurate process management
- Switching procedures are monitored

- Smaller heating and cooling power requirement
- Buffer volume for energy-saving operation

### *...safe, reliable and low on maintenance*

Fully automated process monitoring

Durable construction

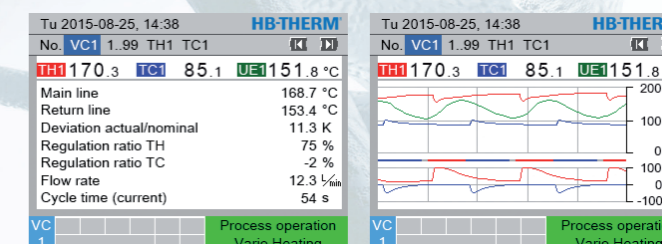
- Solely non-corroding materials in the hydraulic circuit
- Switching without pressure shocks

Improved protection for the mould

- Closed system without oxygen contact
- Avoids steam, scaling and corrosion

### *...easy, intelligent and convenient*

- Clever wizards determine setpoint temperatures, delays and switching times
- Freely selectable control mode
- Recording of data via USB and analysis in Excel

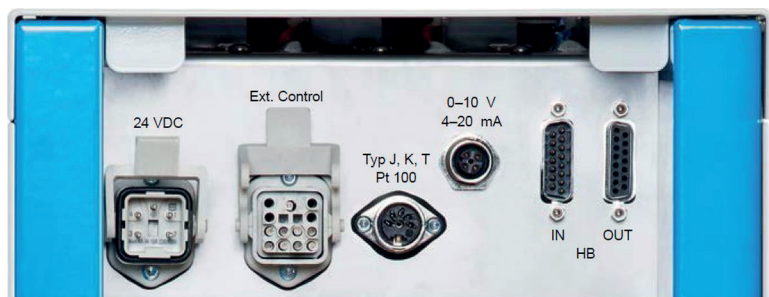


# Technical Data

## Standard Equipment

<b>Hydraulics</b>	Closed hydraulic system without oxygen contact	
	Buffer volume	
	Maintenance-free, pressure shock-free	
	Hydraulic circuit made of non-corroding materials	
<b>Functions</b>	Wizards determine setpoint temperatures, delays and switching times	
<b>Monitoring / Safety</b>	Monitoring of the switching procedures	
	Automatic limit value settings for temperatures and flow	
	Electrically operated valves (no compressed air)	
	Lockable and abrasion resistant castors (PUR)	
<b>Command / Display</b>	Fibre-free insulation	
	Large choice of display windows and values	
	Storage of specific variothermal parameters	
	Data recording	
<b>Interface</b>	HB (IN/OUT)	HB-Therm data interface CAN for connection to a temperature control unit Thermo-5 or control module Panel-5 2 sockets Sub-D 15 pin (1 male / 1 female)
	Typ J, K, T, Pt 100	External sensor connector (thermocouple or Pt 100 in 3-wire circuit) 1 socket Audio 5 pin (female)
	0–10 V, 4–20 mA	External sensor (standard signals) 1 socket 8 pin M12 (female)
	Ext. Control	2 digital inputs and 2 digital outputs for switchover commands via potential-free contact (pulse or continuous contact) 1 socket Harting Han 12Q (female); Connecting cable with plug, 10 m
<b>Power supply</b>	24 VDC	Power supply with supplied mains adapter
		100–240 VAC, 50/60 Hz, <65 W
		1 socket Harting Han 4A (male)

Communication (→P. 6, Fig. 1)



## Services

Optional services for variothermal applications on a time and material basis:

- Assessment of variothermal application based on mould data (approx. 1 day)  
The current injection moulding application is assessed in terms of variothermal control. This gives an assessment of whether the desired objectives can be met and with which equipment.
- Moulding support of the variothermal process (approx. 1 day)  
Planning and documentation of trial series, running trials, production support and optimisation

### Technical Specifications

<b>Switching unit</b>	Heat transfer medium		Water
	Maximum main line temperature	°C	180
<b>Type</b>			<b>HB-VS180</b>
<b>Buffer volume</b>	Volume 0,9 L	<b>US1</b>	●
	Volume 1,8 L	<b>US2</b>	○ <sup>1)</sup>
<b>Accessories</b> <sup>2)</sup>	Connection set (hydr.) Vario-5/Thermo-5, size 1 or 2; 3 m	O/ID	26847-9
	Connection set (hydr.) Vario-5/Thermo-5, size 3; 3 m	O/ID	26848-9
	Connection set (hydr.) Vario-5/mould; 1,5 m	O/ID	26841-6
	Cable HB, 5 m	O/ID	24858-3
	Cable HB/CAN, 5 m	O/ID	26825-1
	Cable CAN, 5 m	O/ID	22571-1
	Proximity switch with magnetic base, 10 m	O/ID	26821-10
	IR-Temperature sensor with magnetic base, 3 m	O/ID	26819-1
<b>Services</b>	Emission level stickers 25 mm (7 pieces)	O/ID	26843-1
	Assessment of variothermal application based on mould data	O/ID	26844
	Moulding support of the variothermal process	O/ID	26845

**Ordering example: HB-VS180-US1, English** (without accessories)

Dimensions (→P. 7, Fig. 2)	Height	mm	484
	Width	mm	240
	Depth	mm	675
Weight max.		kg	38
Connection, Input/Output (H/C/M)			G¾
		bar, °C	25, 200

● Standard specification    ○ Optional

<sup>1)</sup> Recommended for mould circuits of 0,9 L and larger

<sup>2)</sup> For detailed information and other lengths → Accessories program (D8064-E)

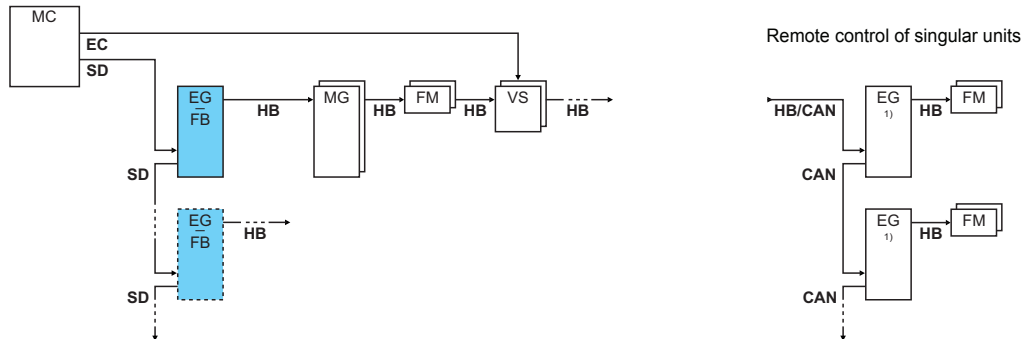
### Recommendation for Unit Type Thermo-5

Hot water circuit	Thermo-5, HB-160 or HB-180, pump 4M, heating and cooling power depends on application
Cold water circuit	Thermo-5, HB-140, pump 4M, heating and cooling power depends on application (if the unit for the hot water circuit is run at over 160 °C, the unit for the cold water circuit must be equipped with a 17 bar safety valve and a manometer 25 bar)
Communication	Interface equipment for singular units: Interface HB (standard equipment since construction year 2015), Interface CAN ( <b>ZC</b> )

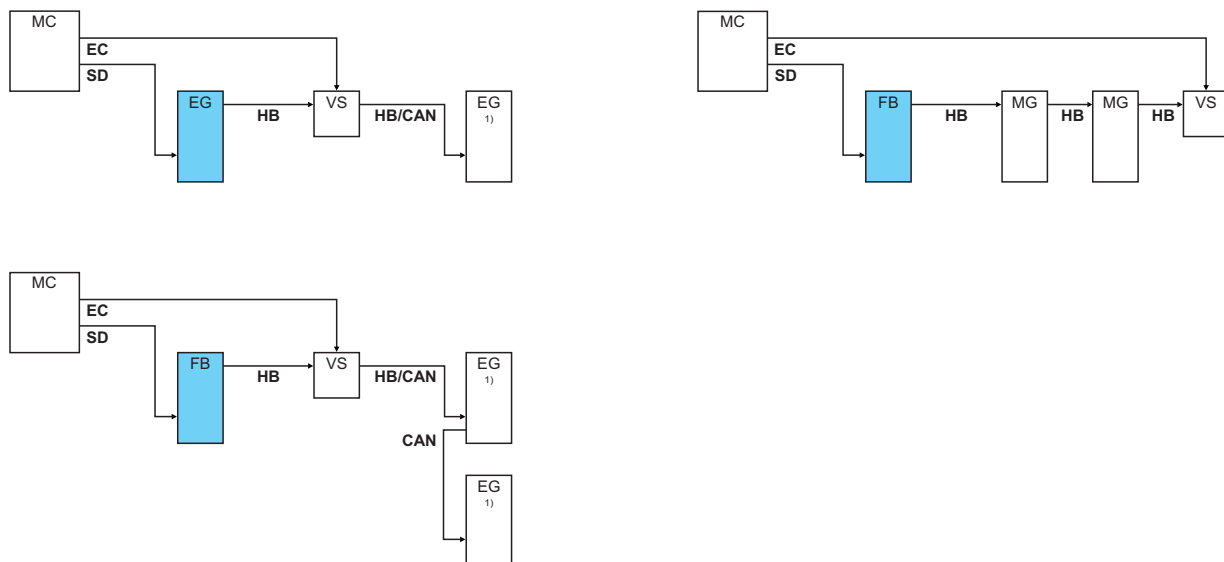
Note: In order to ensure compatibility, detailed clarification must be obtained for equipment that differs from this recommendation.

## Communication (Fig. 1)

### Basic circuit diagram



### Examples



Legend	Description	Note
MC	Machine control	max. 1
FB	Control modul Panel-5	max. 1
EG	Temperature control unit Thermo-5, singular unit	max. 16 (per command)
MG	Temperature control unit Thermo-5, modular unit	
FM	Flow meter Flow-5	max. 32 (at 4 circuits each)
VS	Switching unit Vario-5	max. 8
SD	Communication via serial data interface DIGITAL (ZD), CAN (ZC) or PROFIBUS-DP (ZP)	Maximum number of units, operating range and transfer of flow rate values depend on machine control and protocol
HB	Communication interface HB	Order of connection is not relevant
HB/CAN	Communication interface HB/CAN	To remotely control singular units
CAN	Communication interface CAN (ZC)	
EC	External Control	Assignment dependent on machine control unit

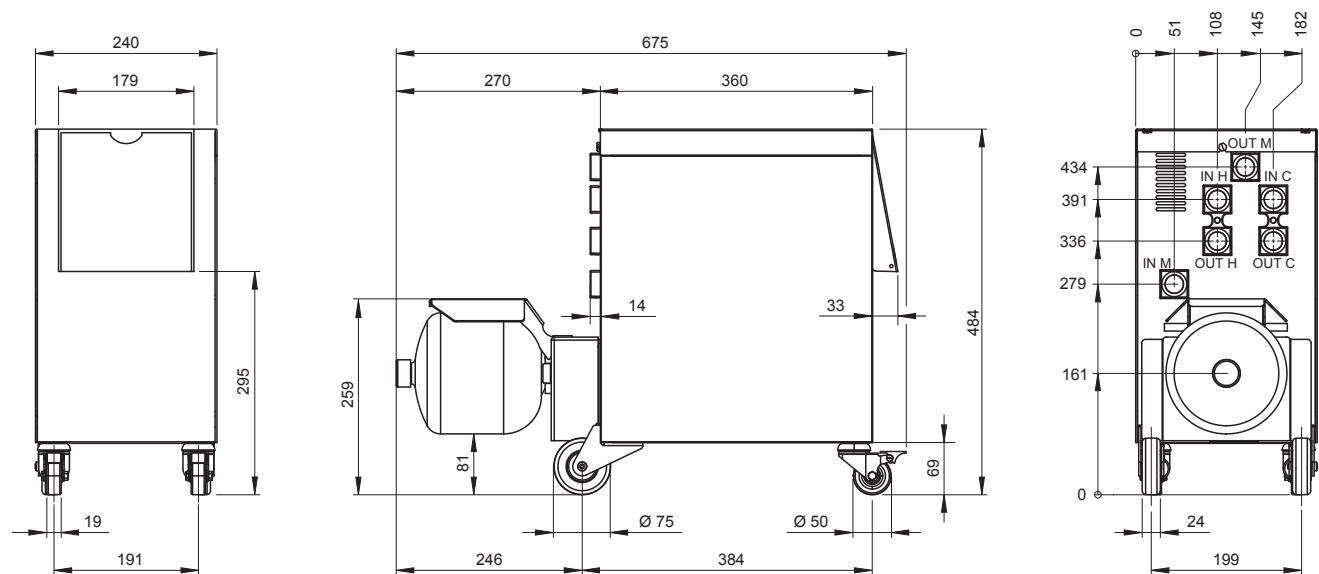
■ Command <sup>1)</sup> Command deactivated

General Technical Data

Environment	Temperature	5–40 °C
	Humidity	35–85 % RH (non-condensing)
Colour	Cover	RAL 7035 (light grey gloss), RAL 5012 (light blue gloss)
	Door	RAL 7021 (black-grey gloss)
Protection class		IP 54
Standards		EN ISO 13732-1, EN 61010-1, EN 61000-6-2, EN 61000-6-4
Certification / Approval		CE (compliance with relevant CE directives)

Dimensions (Fig. 2)

HB-VS180, scale 1:10



IN H Input hot water circuit  
OUT H Output hot water circuit

IN C Input cold water circuit  
OUT C Output cold water circuit

IN M Input mould circuit (from mould)  
OUT M Output mould circuit (to mould)



# Variothermal Control

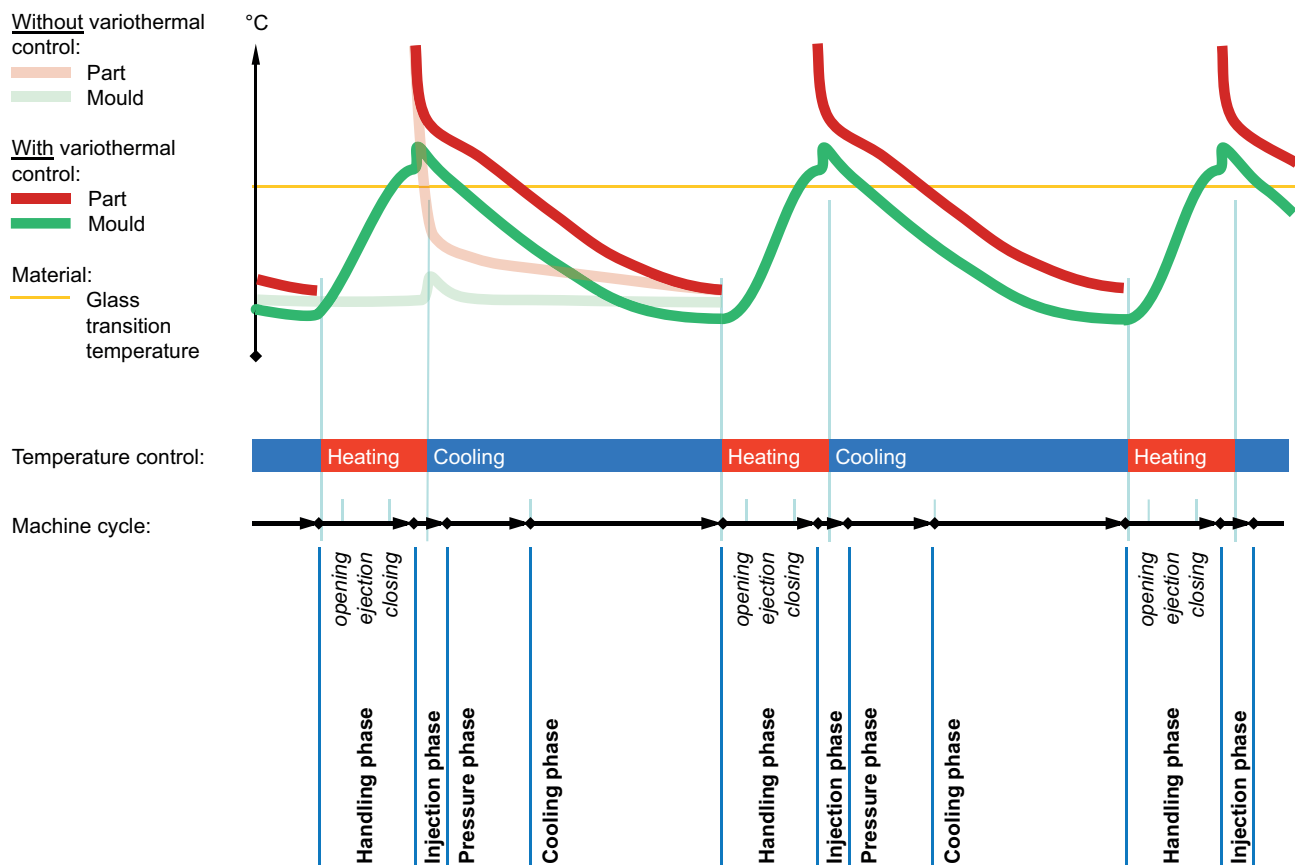
In injection moulding some typical problems cannot be solved by traditional temperature control:

- visible weld lines in optically critical areas.
- incomplete moulding of the finest structures and lacking contour accuracy (e.g. for optical lenses, micro- or nano-structures, piano lacquer)
- insufficient surface quality of foamed and fibre-reinforced parts
- excessively high injection pressures for extremely small cross-sections
- sink marks at extreme wall thickness ratios

Reasons: In injection moulding the hot plastic melt meets a relatively cool mould surface in the injection phase.

The latter needs to be cool in order to dissipate the heat out of the melt to solidify the part. The mould temperature depends not only on the material, but also on the demands of the component quality and the cycle time. At high temperatures the quality of the component increases, thus longer cycle times are necessary. This negatively affects the unit costs. Therefore, the choice of the mould temperature is always a compromise between quality and cost effectiveness.

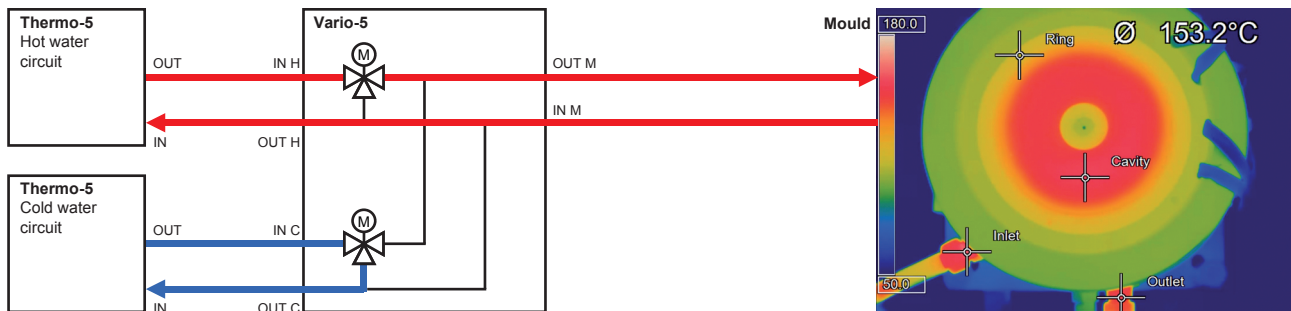
If no optimum quality is achieved with a compromise or impermissible process parameters would be needed, an alternative temperature control strategy is necessary. A high temperature during injection followed by a cold temperature in the cooling phase can be a solution. It is called a variothermal control. Two temperature control units, one operating at a higher and one at a lower temperature combined with a switching unit will solve such demanding tasks.



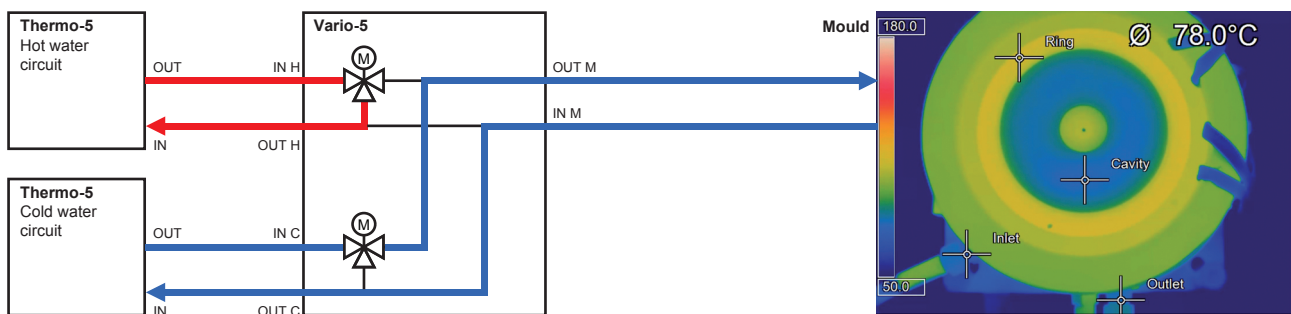
Process procedure in injection moulding with variothermal control

### The Process

The fluid-fluid technique sends alternately hot and cold temperature control medium through the temperature control channel immediately below the cavity surface, controlled by the machine cycle. The temperatures are set on the two temperature control units. If there is a temperature sensor available at a suitable position in the mould, the switch-over or the start of injection can also be made depending on the mould temperature to increase process reliability.



Operating mode: Heating



Operating mode: Cooling

### Control

The cyclical heating and cooling is actuated in sync with the machine cycle. The highest temperature is reached in the injection phase, the lowest at the time of demoulding. For this purpose, the signals for the switch-over have to precede by the amount of the system delay.

The parameters relevant to the injection moulding process such as injection, holding pressure or cooling time are set via the machine controls. Therefore it suggests itself that the signals for controlling the switch-over should also be set via the machine controls. For this, digital output signals of the machine can be used. Depending on the machine type, values for the variothermal process can be set more or less comfortably.

If only one signal is available for the synchronisation with the injection moulding process the respective delay times in relation to the machine signal must be set on the variothermal equipment. Although the machine interface thus is much simpler it has the distinct disadvantage of having to adjust the settings on the variothermal equipment as well when changing the machine settings.

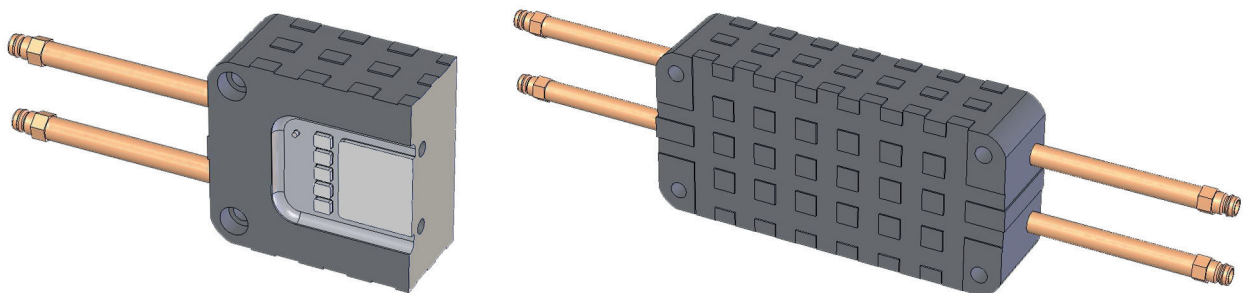
The timer signals for heating and cooling are independent from the actual temperature in the mould. A separate temperature sensor is not necessary. Software wizards help to determine the necessary delays in a simple way.

### Frame Conditions

In variothermal control the temperature at the surface of the cavity will be actively changed within the injection cycle. The area around the cavity is thus cyclically heated and cooled. Depending on the configuration of the temperature control channels the temperature at the surface of the cavity reacts stronger or weaker and the area is larger or smaller. To efficiently achieve the largest temperature gradients possible the following is recommended:

Distance of the temperature control channel from the surface of the cavity	The distances between the temperature control channel and the cavity must be kept as small as possible.
Variothermal mass	Keep the variothermal area as small as possible: <ul style="list-style-type: none"> <li>• Run only those circuits on variothermal process which have an influence on the critical mould area</li> <li>• As possible, create inserts that are small and can be thermally isolated from the rest of the mould.</li> </ul>
Isolation	Isolate the variothermal areas with isolating materials or clearances from the rest of the mould.
Connections	Connect the variothermal areas (inserts) directly with specific pipes not in contact with the rest of the mould (clearance) to the temperature control system. Avoid supply via the mould plates or frames as well as heavy distribution and measuring systems, as they will unnecessarily increase the variothermal mass.
Material	In critical cases, inserts of copper alloy or other materials with good thermal conductivity are to be used for the variothermal areas (The thermal conductivity of copper is more than five times greater than that of steel).
Temperature control channel cross section	Large channel diameters or several channels increase the surface and thereby the transfer of heat.
Flow rate	The temperature control channels should be designed to achieve the best possible flow rate. This improves the transfer of heat between the temperature control medium and the mould and results in shorter response times or quicker temperature gradients in the mould.

Note: Variothermally controlled circuits can come up to the temperature of the hot unit. Seals, couplings, hoses need to be selected accordingly. The cyclical temperature changes can cause moveable inserts such as sliders to jam.



*Example for the design of a mould-insert for variothermal control*

# HB-THERM®

## Temperature Control Technology

### **HB-Therm worldwide.**

Since 1967 HB-Therm AG has been developing and producing innovative „Swiss-made“ temperature control technology to the highest quality standards. With its comprehensive know-how and motivated workforce, the company has succeeded in becoming the technology leader in its sector.

This Swiss family enterprise employs around 110 staff and has established itself as a systems supplier offering seamless customer support from machine design through to a complete after-sales service. Production is exclusively in St. Gallen.

Own subsidiaries (Sales & Service) in Germany and France as well as 40 other national agencies are representing HB-Therm around the globe.

The company's quality and environmental management system is based on the continual improvement of all activities and processes and is certified to ISO 9001/14001. All its products and services are based on a philosophy of offering „Swiss-made“ quality to customers.

### **Customer service. Included.**

With our sales and marketing network service we can offer comprehensive expert advice and assistance in:

- Optimum temperature control process
- Determination of the specification of the product and advice regarding functionality
- Electrical and hydraulic connections
- Data interfaces
- Heat transfer medium
- Servicing of the equipment

Our experts are always available for support when questions of specialist requirements or applications arise or when putting the equipment into operation, or for the operational training of your staff.

HB-THERM AG  
Spinnereistrasse 10 (WU 3)  
Postfach  
9006 St. Gallen  
Switzerland  
Phone +41 71 243 6-530, Fax -418  
info@hb-therm.ch, www.hb-therm.ch

### Subsidiaries

HB-THERM GmbH  
Dammstrasse 70-80  
53721 Siegburg  
Germany  
Phone +49 2241 5946-0, Fax -20  
info@hb-therm.de, www.hb-therm.de

HB-THERM S.A.S.  
La Grande Vaupière  
01390 St. Jean de Thurigneux  
France  
Phone +33 4 74 00 43 30  
Fax +33 4 26 23 68 22  
commercial@hb-therm.fr, www.hb-therm.fr

### Distributors

**Australia (AU)**  
Parrington Group Pty. Ltd., Magill SA 5072

**Austria (AT)**  
Luger Gesellschaft mbH, 3011 Purkersdorf

**Belgium (BE)**  
AJ Solutions BVBA, 2240 Zandhoven

**Brazil (BR)**  
HDB Representações Ltda, Cotia (SP) 06705-110

**China (CN)**  
ARBURG (Shanghai) Co., Ltd., 201100 Shanghai  
ARBURG Machine & Trading, 518108 Shenzhen  
Dongguan Chang An Shihui, 523850 Dongguan City  
Tianjin Cenglary Trading Co., Ltd., 300452 Tianjin City

**Croatia (HR)**  
Luger Gesellschaft mbH, 3011 Purkersdorf

**Czech Republic (CZ)**  
Luger spol. s.r.o., 251 01 Ricany

**Denmark (DK)**  
SAXE Hansen, 3500 Værløse

**Finland (FI)**  
Engel Finland Oy, 00380 Helsinki

**France (FR)**  
HB-THERM S.A.S., 01390 St. Jean de Thurigneux

**Germany (DE)**  
HB-THERM GmbH, 53721 Siegburg

**Hong Kong (HK)**  
ARBURG (HK) Ltd., Quarry Bay

**Hungary (HU)**  
Luger Kft., Budapest 1147

**India (IN)**  
Salnik Solutions, 400072 Mumbai

**Indonesia (ID)**  
ARBURG Indonesia, Jakarta 10150

**Ireland (IE)**  
KraussMaffei (UK) Ltd, WA5 7TR Warrington

**Israel (IL)**  
Israpack Ltd., 31097 Haifa

**Italy (IT)**  
Nickerson Italia Srl, 24030 Brembate di Sopra (BG)

**Japan (JP)**  
ARBTECHNO Ltd., Iwaki 973-8406

**Korea, Republic of (KR)**  
IMTS, Seoul

**Liechtenstein (LI)**  
HB-THERM AG, 9006 St. Gallen

**Luxembourg (LU)**  
AJ Solutions BVBA, 2240 Zandhoven

**Malaysia (MY)**  
ARBURG Sdn Bhd, 46150 Petaling Jaya

**Mexico (MX)**  
Engel Mexico S.A. de C.V., 76246 El Marques, Querétaro

**Netherlands (NL)**  
ROBOTECH bv, 4824 JS Breda

**New Zealand (NZ)**  
AOTEA MACHINERY LTD., Auckland 1145

**Poland (PL)**  
ELBI-Wroclaw Sp. z o.o., 53-234 Wroclaw

**Portugal (PT)**  
novaELECTROLIS, Comércio de, 2401-970 Leiria

**Romania (RO)**  
Plastic Technology Service Srl, 032451 Bucuresti

**Singapore (SG)**  
ARBURG PTE LTD., Singapore 139965

**Slovakia (SK)**  
Luger spol. s.r.o., 251 01 Ricany

**Slovenia (SI)**  
Luger Gesellschaft mbH, 3011 Purkersdorf

**South Africa (ZA)**  
Maritime Marketing, 1684 Kyalami

**Spain (ES)**  
Netstal Máquinas, S.A., 08100 Mollet del Vallès

**Sweden (SE)**  
Forvema AB, 511 54 Kinna

**Switzerland (CH)**  
HB-THERM AG, 9006 St. Gallen

**Taiwan (TW)**  
Morglory International Co., Ltd., Taichung City 407

**Thailand (TH)**  
ARBURG (Thailand) Co., Ltd., Samutprakarn 10540

**Turkey (TR)**  
ARBURG Plastik Enjeksiyon, 34524 Yakuplu-Büyükkçekmece/Istanbul

**United Kingdom (GB)**  
KraussMaffei (UK) Ltd, WA5 7TR Warrington

**United States (US)**  
Frigel North America, East Dundee, IL 60118