



CONTENITORI TRIFASE THREE-PHASE CONTAINERS

C

Caratteristiche tecniche - Technical specifications

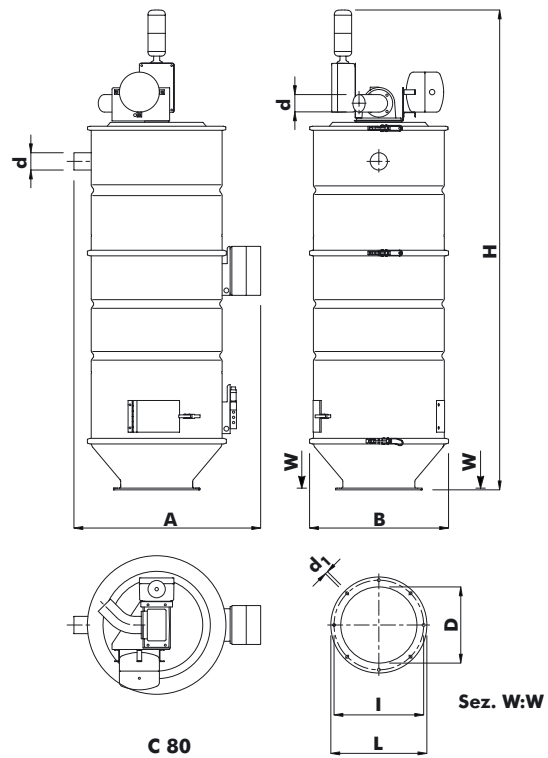
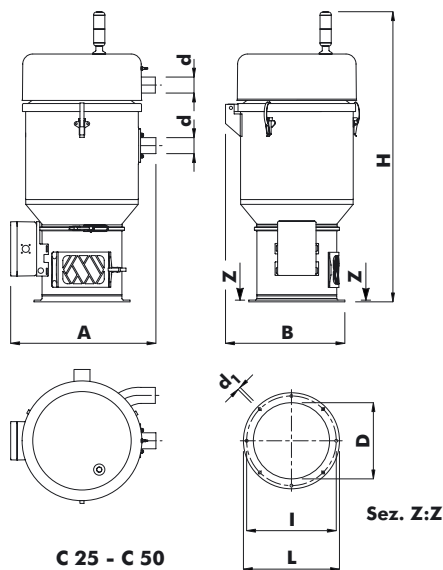
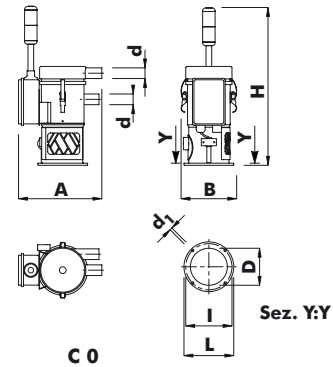
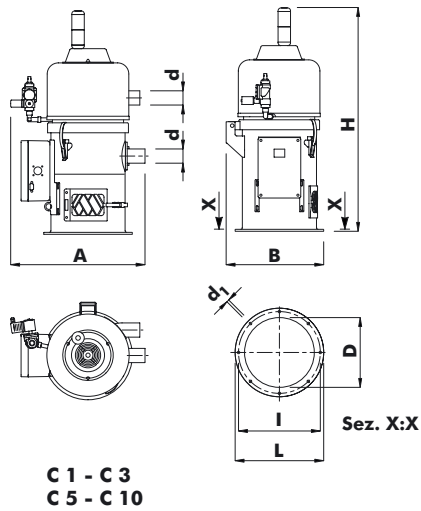
Modello Model	Capacità Capacity dm ³	Diametro tubazioni Pipe diameter		Fori flangia Flange holes		Tensione Voltage V
		Standard [Ø mm]	Optional [Ø mm]	N.	Ø mm	
C 0	0,5	30	-	4	7	24 dc
C 1	1,0	40	30 *	8	7	24 dc
C 3	3,0	40	50 *	8	7	24 dc
C 5	5,0	40	50 *	8	9	24 dc
C 10	10,0	50	40 *	8	9	24 dc
C 25	25,0	50	60 *	8	9	24 dc
C 50	50,0	50	60 *	8	9	24 dc
C 80	80,0	60	-	8	9	24 dc

* E' necessario acquisire separatamente un kit d'adattamento / It is required the separate purchase of an adapting kit.



CONTENITORI TRIFASE THREE-PHASE CONTAINERS

C



Dimensioni - Dimensions

Modello Model	A	B	H	d	D	L	I	d ₁	Peso Weight
	mm	mm	mm	Ø mm	Ø mm	Ø mm	Ø mm	Ø mm	kg
C 0	234	156	444	30	104	140	130	4 x 7	4,5
C 1	322	219	619	40	140	195	180	8 x 7	7,0
C 3	378	274	629	40	196	249	230	8 x 7	8,0
C 5	393	322	670	40	238	300	280	8 x 9	11,0
C 10	390	322	850	50	238	300	280	8 x 9	13,0
C 25	443	419	906	50	238	300	280	8 x 9	16,0
C 50	443	419	1178	50	238	300	280	8 x 9	19,0
C 80	608	492	1153	60	238	300	280	8 x 9	30,0



THREE-PHASE SUCTION UNITS V S



Technical features

Model	Suction Unit	Motor power		Throughput - length = 4 m - Height = 4 m		Vacuum		Noise level
	Type	kW	HP	kg/h	lb/h	mbar	psi	dbA
V 10	One-stage side channels	1,3	1,7	500*	1102*	170	2,5	63
V 20	One-stage side channels	1,6	2,1	1000*	2205*	200	2,9	64
V 30	One-stage side channels	3,0	4,0	1500*	3307*	260	3,8	69
V 40	One-stage side channels	4,0	5,4	1700*	3748*	370	5,4	72
V 50	One-stage side channels	5,5	7,4	2100*	4630*	410	5,9	73
V 52	Two-stage side channels	5,5	7,4	2400*	5291*	530	7,7	71
V 70	One-stage side channels	7,5	10,1	2700*	5952*	360	5,2	74
V 72	Two-stage side channels	7,5	10,1	3500*	7716*	450	6,5	70
V 110	One-stage side channels	11,0	14,8	3200*	7055*	440	6,4	74
V 112	Two-stage side channels	11,0	14,8	3800*	8378*	530	7,7	71

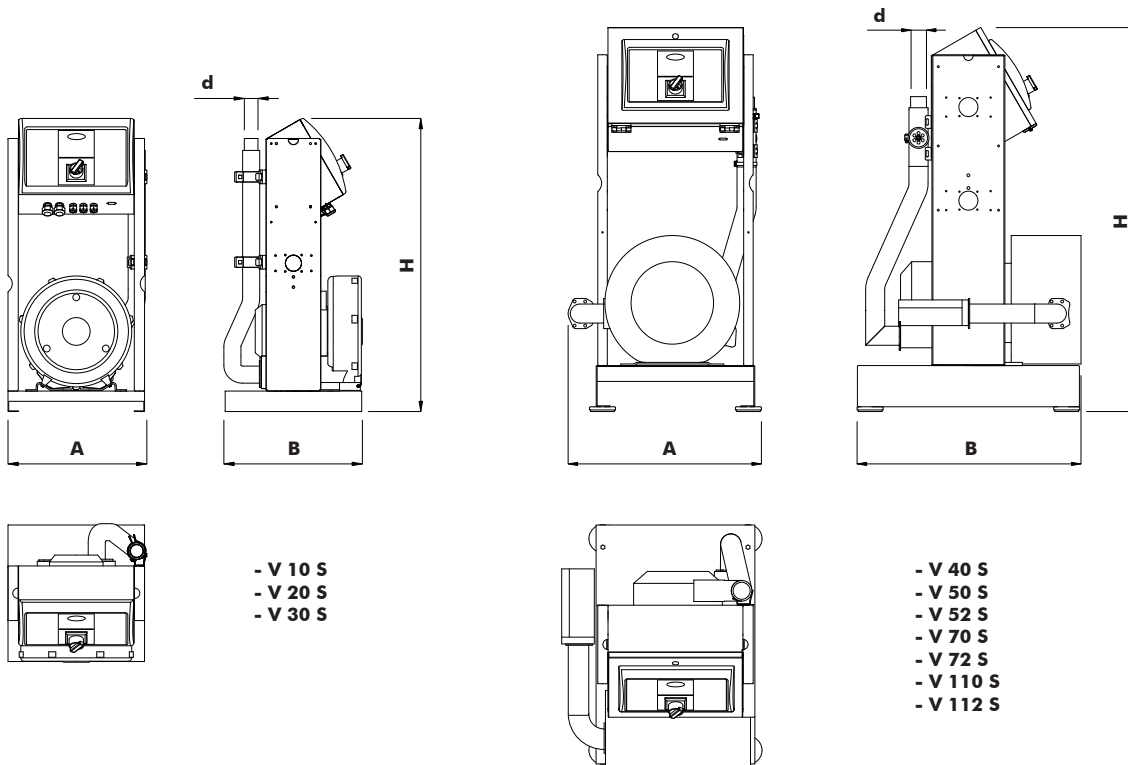
Standard power supply: 400V/3ph/50Hz.

* Referring throughput with materials in granules (Bulk density = 0,65 kg/dmc / 40,6 lb/cft).



THREE-PHASE SUCTION UNITS

V S



Dimensions

Model	A		B		H		d		Weight	
	mm	in	mm	in	mm	in	Ø mm	Ø in	kg	lb
V 10	411	16,2	400	15,7	868	34,2	40 - 50	1,57 - 1,97	39	86
V 20	411	16,2	402	15,8	868	34,2	40 - 50	1,57 - 1,97	44	97
V 30	411	16,2	437	17,2	868	34,2	50	1,97	57	126
V 40	629	24,8	702	27,6	1210	47,6	50 - 60	1,97 - 2,36	90	198
V 50	627	24,7	706	27,8	1210	47,6	50 - 60	1,97 - 2,36	115	254
V 52	642	25,3	1002	39,4	1218	48,0	50 - 60	1,97 - 2,36	162	357
V 70	654	25,7	850	33,5	1210	47,6	60	2,36	227	500
V 72	642	25,3	1059	41,7	1218	48,0	60	2,36	189	417
V 110	654	25,7	981	38,6	1210	47,6	60	2,36	252	556
V 112	642	25,3	1002	39,4	1218	48,0	60	2,36	222	489



DUO THREE-PHASE SUCTION UNITS

V D



Technical features

Model	Suction Unit	Motor power		Throughput - length = 4 m - Height = 4 m		Vacuum		Noise level
	Type	kW	HP	kg/h	lb/h	mbar	psi	dba
V 10 D	One-stage side channels	1,3	1,74	650 *	1433 *	170	2,47	63
V 20 D	One-stage side channels	1,6	2,15	800 *	1763 *	200	2,90	64
V 30 D	One-stage side channels	3,0	4,02	1500 *	3307 *	260	3,77	69
V 40 D	One-stage side channels	4,0	5,36	2000 *	4409 *	370	5,37	72
V 50 D	One-stage side channels	5,5	7,38	2800 *	6173 *	410	5,95	73
V 70 D	One-stage side channels	7,5	10,06	3700 *	8157 *	360	5,22	74
V 110 D	One-stage side channels	11,0	14,75	4300 *	9480 *	440	6,38	74

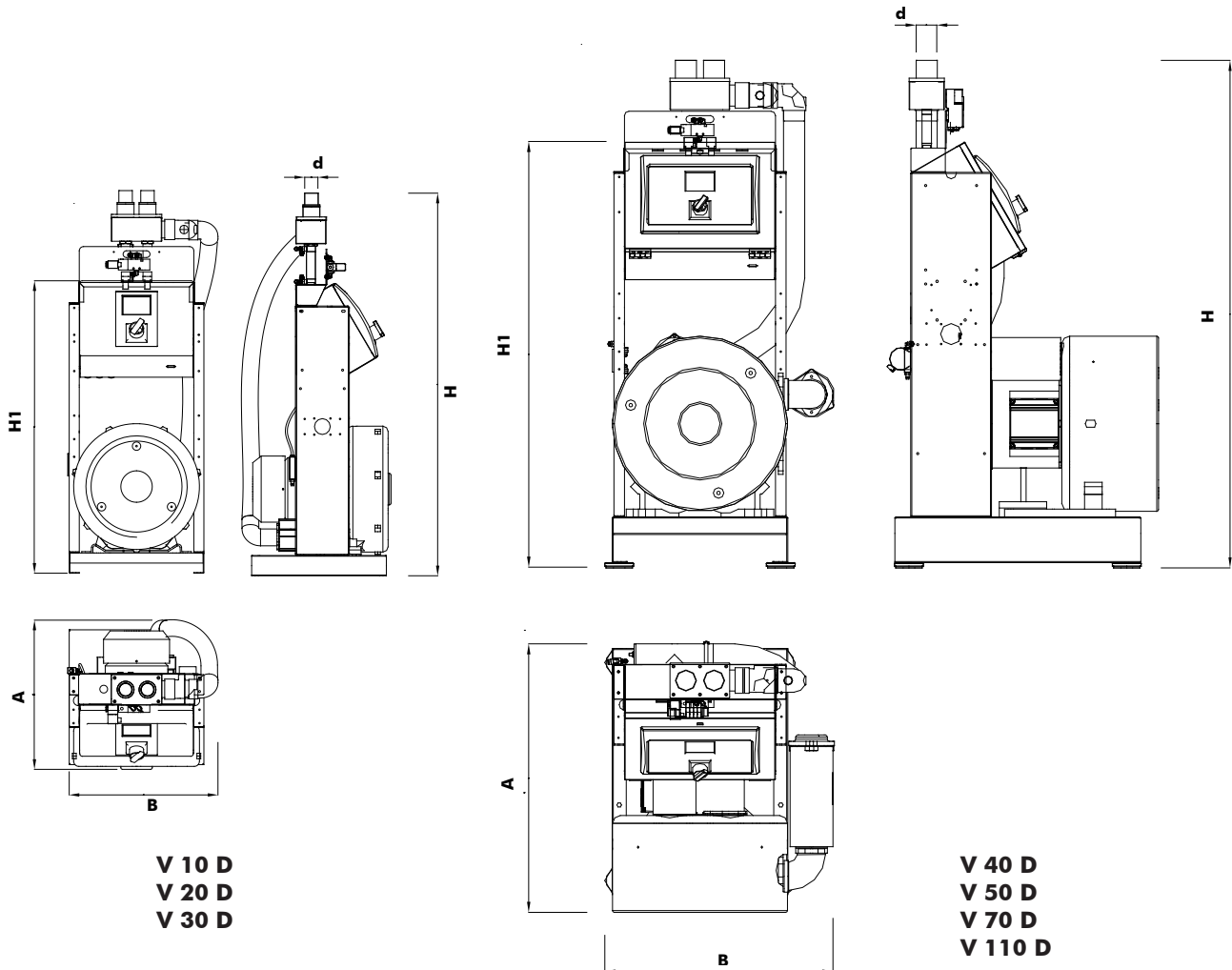
Standard power supply: **400V/3ph/50Hz.**

* Referring throughput with materials in granules (Bulk density = 0,65 kg/dmc / 40,6 lb/cft).



DUO THREE-PHASE SUCTION UNITS

V D



V 10 D
V 20 D
V 30 D

V 40 D
V 50 D
V 70 D
V 110 D

Dimensions

Model	A		B		H		H1		d		Weight	
	mm	in	mm	in	mm	in	mm	in	Ø mm	Ø in	kg	lb
V 10 D	400	15,8	446	17,6	1130	44,5	868	34,2	40	1,57	44	97
V 20 D	400	15,8	446	17,6	1130	44,5	868	34,2	40	1,57	49	108
V 30 D	443	17,4	446	17,6	1090	42,9	868	34,2	50	1,97	63	139
V 40 D	702	27,6	659	25,9	1491	58,7	1210	47,6	50	1,97	88	194
V 50 D	706	27,8	657	25,9	1491	58,7	1210	47,6	50	1,97	119	262
V 70 D	770	30,3	654	25,8	1444	56,9	1210	47,6	60	2,36	232	511
V 110 D	908	35,8	653	25,7	1444	56,9	1210	47,6	60	2,36	257	567

**QUAD THREE-PHASE FEEDER****V Q****Technical features**

Model	Suction Unit	Motor power	Throughput - Length = 4 m - Height = 4 m	Vacuum	Noise level
	Type	kW	kg/h	mbar	dbA
V 10 Q	One-stage side channels	1,3	650*	170	63
V 20 Q	One-stage side channels	1,6	800*	200	64
V 30 Q	One-stage side channels	3,0	1500*	260	69
V 40 Q	Two-stage side channels	4,0	2000*	370	72
V 50 Q	Two-stage side channels	5,5	2800*	410	73
V 70 Q	Two-stage side channels	7,5	3700*	360	74
V 110 Q	Two-stage side channels	11,0	4300*	440	74

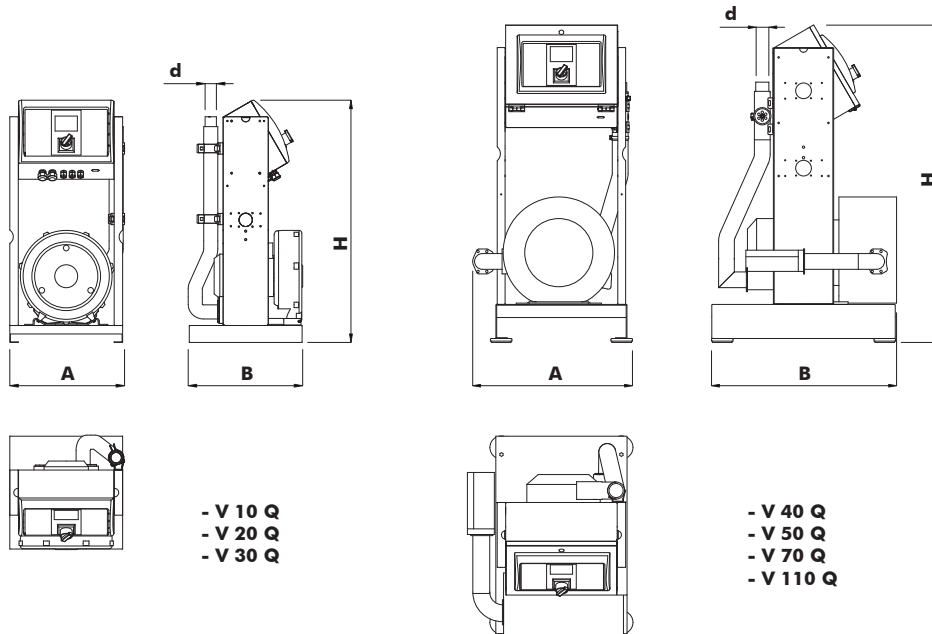
Standard power supply: **400V/3ph/50Hz.**

* Referring throughput with materials in granules (Bulk density = 0,65 kg/dmc).



QUAD THREE-PHASE FEEDER

V Q



Compatibility between suction units and filters

Suction units \ Filters	V 10 Q	V 20 Q	V 30 Q	V 40 Q	V 50 Q	V 70 Q	V 110 Q
FC 20	●	●	●				
FC 25			●	●	●	○	
FC 31			○	●	●	●	○
FC 41				○	●	●	●
FC 61					○	●	●
FC 41 M				○	●	●	●
FC 61 M					○	●	●
FC 81 M						○	●

○ = Possible combinations.
 ● = Recommended combinations.

Dimensions

Model	A	B	H	d	Weight
	mm	mm	mm	Ø mm	kg
V 10 Q	400	402	860	40	44
V 20 Q	400	402	860	40 - 50	49
V 30 Q	400	437	860	50	63
V 40 Q	608	702	1210	50	88
V 50 Q	622	706	1210	50	119
V 70 Q	635	751	1210	60	232
V 110 Q	654	906	1210	60	257

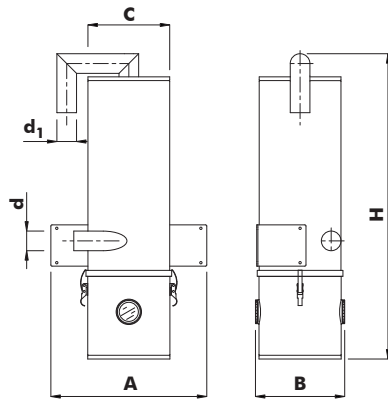
**FILTRI A CICLONE
CYCLONE FILTERS****FC****Caratteristiche tecniche - Technical specifications**

Modello Model	Tipo filtro Filter type	Materiale filtro Filter material	Grado filtrazione Filtering level	Contenitore polveri Container for powder <i>dm³</i>	Tensione Voltage <i>V</i>
FC 20	Cartuccia / Cartridge	Cellulosa / Cellulose	2 micron	4,5	24 dc
FC 25	Cartuccia / Cartridge	Cellulosa / Cellulose	2 micron	10	24 dc
FC 31	Cartuccia / Cartridge	Cellulosa / Cellulose	2 micron	28	24 dc
FC 41	Cartuccia / Cartridge	Cellulosa / Cellulose	2 micron	40	24 ac

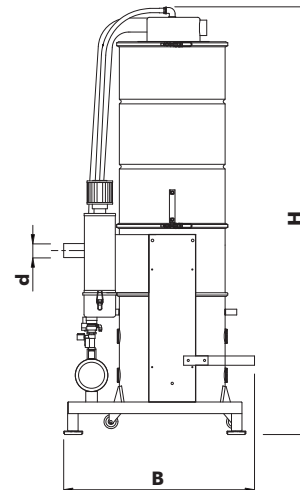
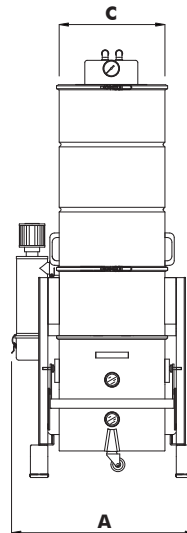
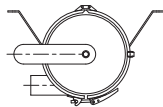


FILTRI A CICLONE CYCLONE FILTERS

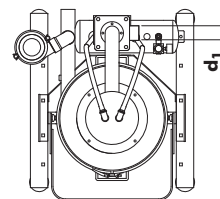
FC



FC 20 - FC 25



FC 31 - FC 41



Compatibilità unità aspiranti e filtri Compatibility between suction units and filters

Unità aspiranti Suction units	V 10 S V 10 Q	V 20 S V 20 Q VTS 20	V 30 S V 30 Q VTS 30 KMS 30 KSS 30	VTN 30 KMN 30 KSN 30	V 40 S V 40 Q VTS 40 KMS 40 KSS 40	VTN 40 KMN 40 KSN 40	V 50 S V 50 Q VTS 50 KMS 50 KSS 50	VTN 50 KMN 50 KSN 50	VTS 52 KMS 52 KSS 52	VTS 53 KMS 53 KSS 53	V 70 S V 70 Q VTS 70 KMS 70 KSS 70	VTS 72 KMS 72 KSS 72	VTK 70	VTN 90 KMN 90 KSN 90	V 110 S V 110 Q VTS 110 KMS 110 KSS 110	VTS 112 KMS 112 KSS 112	VTS 113 KMS 113 KSS 113	VTK 110	VTK 150	
FC 20	●	●	●																	
FC 25			●		●		●				●									
FC 31				●	●	●	●		●	○	●	○			●	○				
FC 41					○	●	●	●	●	●	●	●	●	●	●	●	●	●	○	○

○ = Abbinamenti possibili / Possible combinations.
● = Abbinamenti consigliati / Recommended combinations.

Dimensioni - Dimensions

Modello Model	A	B	H	d	d ₁	C	Peso Weight
	mm	mm	mm	Ø mm	Ø mm	Ø mm	kg
FC 20	396	249	700	50	50	208	12,5
FC 25	448	346	818	60	60	300	26,5
FC 31	669	744	1581	60	60	353	79,5
FC 41	776	821	1852	60	63	455	90,5